

Cancer Care Review Engagement Summary

Between 9 October 2020 and 30 October, the engagement team on behalf of Herefordshire and Worcestershire Clinical Commissioning Group (CCG), ran a survey to engage with patients and carers within Herefordshire and Worcestershire, who had a recent diagnosis of cancer (in the last 6 months) with the purpose of gaining their views of providing Cancer Care Reviews (CCR) for patients.

A Cancer Care Review is a discussion between a patient and their GP about their cancer journey. It helps the person affected by cancer in various ways such as; understanding what information and support is available to them in their local area, providing them with an opportunity to talk about their cancer experience and how this has made them feel, and to provide advice and guidance on self-managing their condition. At present, patients are offered a Cancer Care Review within six months of their cancer diagnosis.

Results



31 people responded to the survey



61% (19) of these people had been diagnosed with cancer in the last 6 months and 19% (6) cared for someone who had been diagnosed



75%

75% (18) did not remember having a CCR in the 6 months post diagnosis.

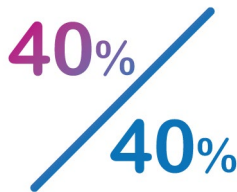


8%

Only 2 people (8%) remembered having a CCR.



Out of these 2 people, one found it to be useful and the other person did not. These 2 people were unable to recall anything useful from their CCR.



40%
/ 40%

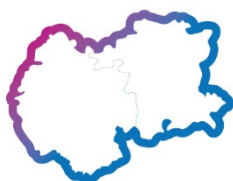
There were mixed views to whether to CCR could be undertaken by another member of surgery staff. 40% (8) yes and 40% (8) said no.

Comments



- "I don't know why I was never offered a Cancer Care review. I have had two cancers - breast and bowel and no review by GP"
- " Mine was handled badly."
- "Never heard of it until now"

Demographics of respondents



The survey was completed by 17 people from Worcestershire, 2 people from Herefordshire, 1 person outside of the area and 10 people did not answer.



30% (9) respondents were aged between 65-74, 23% (7) were 55-64, 10% (3) were 75-84 and 10 people (33%) did not answer.



30% (9) respondents were female, 11 (37%) were male and 10 (33%) people didn't answer.



7 people (24%) have their day-to-day activities limited because of a health problem or disability.



60% (18) of described themselves as White - English/Welsh/Scottish/Northern Irish/British, 1 person was White - Any other White background and 11 people (37%) did not give an answer.



9 people reported to be carers.