

HWIN and PPG Update – Live Event

Thursday 20 January 2022 1pm

Virtual event

If you would like a copy of this presentation in different format,
please contact hw.engage@nhs.net

Welcome

- First session for patients and volunteers
- Opportunity to interact in a virtual way
- Main purpose of the event is to describe the Integrated Care System (ICS)

On the event today:

- Prof. Tamar Thompson, OBE - Deputy Chair and Lay Member (Patient and Public Involvement and Quality)
- Tom Grove – Associate Director of Communications, Engagement & OD
- Ali Roberts - Associate Director – ICS Development, H & W
- Helen Perry-Smith – Senior Engagement Manager
- Ruth Cooper-Jones – Engagement Manager
- Oli Smith – Communications and Design Officer

Integrated Care System

The story so far....

- Herefordshire and Worcestershire have operated as a Sustainability and Transformation Partnership (STP) since 2016
- The four Clinical Commissioning Groups (CCGs) across Herefordshire and Worcestershire joined to form one CCG in April 2020
- Providers, local authorities and Commissioners have been separate
- Integrated Care Systems will bring these partners together to coordinate services and to plan in a way that improves population health and reduces inequalities between different groups.
- Integrated Care Board will be the new statutory organisation from July 2022, replacing Herefordshire and Worcestershire CCG

Back to basics on the H&W ICS

- A new statutory NHS body – Integrated Care Board (ICB)
- Three NHS Trusts
- Eight Local Authorities
- 15 Primary Care Networks (PCNs)
- 80 GP Practices
- 123 Community Pharmacies, 96 Dentists and 64 Optometrists*
- Two Healthwatch
- Thousands of voluntary, community and social enterprise (VCSE) bodies
- More than £1.5bn public spend
- 800,000 people served
- Nearly 20,000 staff in statutory sector bodies

**currently commissioned by NHSE regionally but will transfer to the local ICB in April 2022 or 2023*

How becoming an integrated care system will enable us to be better for our population

Being an ICS will enable...

Us to take an all-age approach that recognises that age is not the main determinant of somebody's health outcomes.

Us to allocate resources in a way that incentivises collaboration and cooperation between partners, not competition and division.

The NHS to work more effectively with partners to focus on whole population health and wellbeing, not just focus on treating illness.

The NHS to work more effectively with partners to focus on whole population health and wellbeing, not just focus on treating illness.

Us to join up the different organisations more effectively that need to come together to help people live healthily.

To work together to address all of the factors that affect people's health – from jobs to housing, from education to environment. It is so much more than just access to health services

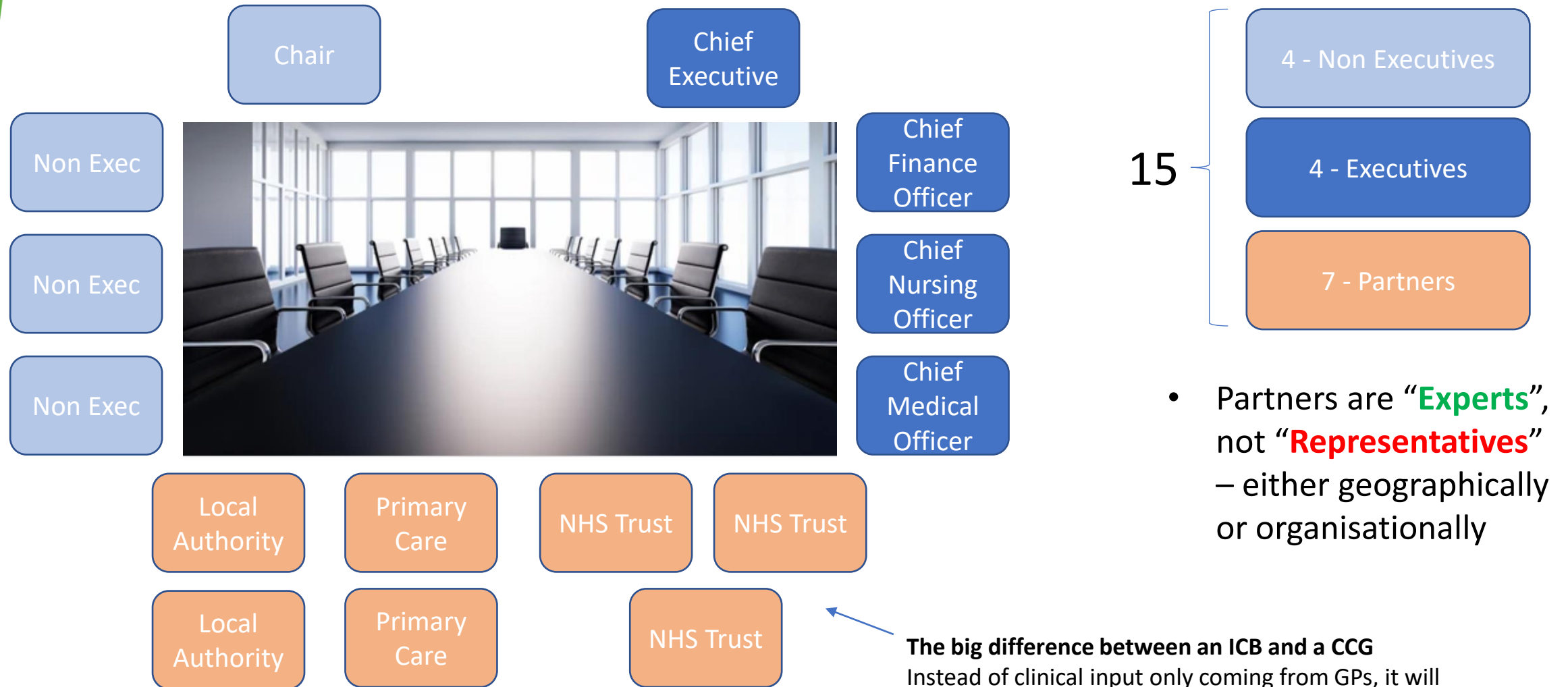
Us to be able to work more effectively with the VCS and communities and build on assets and strengths that already exist.

Us to join up our data, intelligence and insight in a way that enables us to work together more effectively to identify and tackle health inequalities

Us to join up our data, intelligence and insight in a way that enables us to work together more effectively to identify and tackle health inequalities

Us to work together to address all of the factors that affect people's health – from jobs to housing, from education to environment. It is so much more than just access to health services

Creating the Integrated Care Board – the membership model



The big difference between an ICB and a CCG
Instead of clinical input only coming from GPs, it will now come from Trusts and Local Authorities as well.

Working with people and communities



Put voices of people at the centre of decision-making and governance



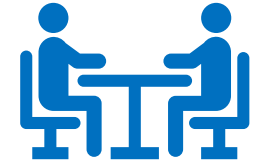
Start engagement early when developing plans



Understand community's needs, experiences and aspirations



Build relationships with excluded groups, especially those affected by inequalities



Work with Healthwatch and VCSE sector as key partners



Provide clear and accessible public information about vision and plans



Use community development approaches that empower people



Use co-production, insight and engagement



Tackle system priorities in partnership with people and communities



Learn from what works and build on the assets of all ICS partners

Communication and Engagement

- On-going communications regarding the legislation and date for establishment
- ICS website to be launched
- Engagement will have a focus on working with partners and health inequalities
- Wider communications and engagement will be planned for nearer the establishment of ICBs
- The work with place (county) and PCNs will enable a more local focus for engagement – potential role for PPGs
- Continue to involve you in ongoing dialogue about the CCG and engagement structures and plans

Questions and Comments

- Please add any questions or comments to the chat box
- The following two questions were received before the event:
 - “How are you informing the public about Integrated Care and are you using the local Hereford and Worcester radio station as part of this?”
 - “H&W ICS has responsibility for providing health services to residents of both Counties. In addition Wye Valley NHS Trust provides healthcare services to South Powys. How will this affect ICS decisions regarding joint service provision across ICS footprint eg Stroke”

Thank you

- We will share the recording of this event and a copy of the presentation on the CCG's website next week:
<https://herefordshireandworcestershireccg.nhs.uk/get-involved/current-engagement/closed-engagement>
- If you want to get in touch please do on: hw.engage@nhs.net
- We would appreciate any feedback on how you feel this event has run and if you would like similar in the future
- Thank you for joining us!